

PROGRESS ON OUR SUGAR COMMITMENT

We are well ahead of our March 2024 commitment, with 90% of our portfolio of routine infant, follow-on and young child formulations (collectively 0-36 months) fully compliant with our sugar commitment.

OUR COMMITMENT

In 2020 we committed to the following by March 2024 on our routine portfolio:

- Lactose as the only carbohydrate source in infants' formulas from birth to 6 months of age
- Lactose as the preferred carbohydrate source in follow-on formulas and young child formulas from 6 to 36 months of age
- To not use sucrose and/or fructose as a carbohydrate source in infant, follow-on and/or young child formula



Please [click here](#) to read our commitment

2021 PROGRESS

Stage 1 and Stage 2 largely completed, focus is on Stage 3



STAGE 1
(0-6 months)

100%

of formulations are fully compliant



STAGE 2
(6-12 months)

95%

of formulations are fully compliant

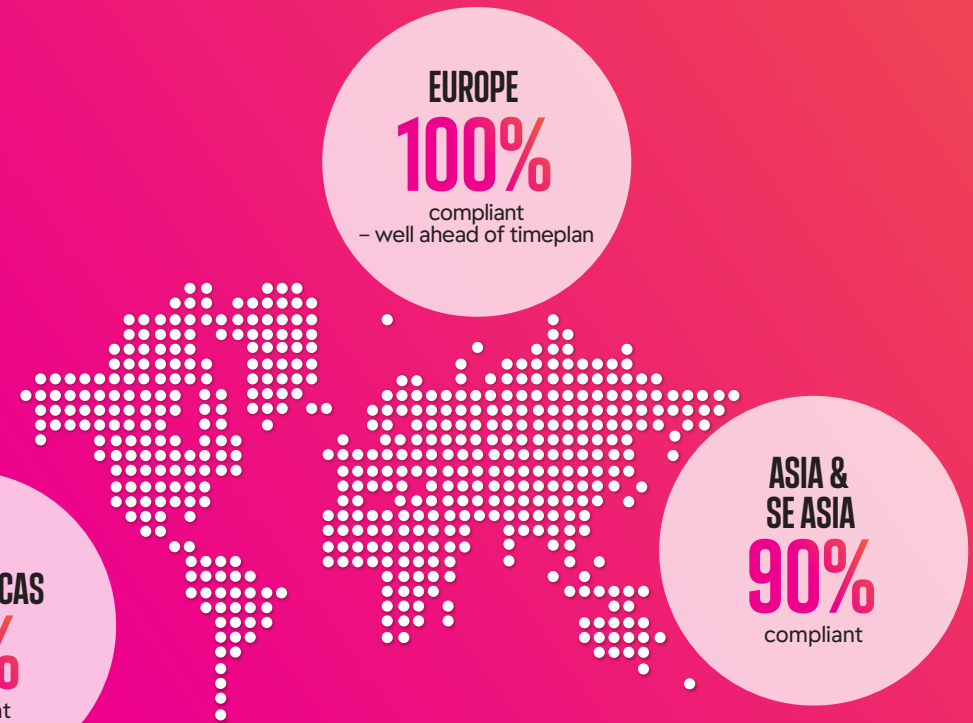


STAGE 3
(12-36 months)

73%

of formulations are currently compliant, with plans in place for the remaining formulations

REGIONAL PROGRESS ON ROUTINE FORMULATIONS 0-36 MONTHS



We will continue to measure and report our continued progress against the commitments publicly on an annual basis.

For more information on our portfolio of well loved brands, our Infant and Child Nutrition Pledge and our Breast-Milk Substitutes (BMS) Marketing Policy, please visit www.reckitt.com